

## **CPDMH's New Emergency Department Q&A Fact Sheet – October 2021**

### **▪ What is the overall plan for the new Emergency Department?**

The scope of the new ED project includes the construction of a single- story, slab on grade building to allow level ambulance/walk-in and barrier free entrances. The new ED will be built at the back of the existing hospital and connected to the main hospital at the first floor via a link that will include an elevator and stairs to navigate the change in elevation.

### **▪ How will the new Emergency Department improve each patient's experience?**

- The new Emergency Department will be linked to the hospital and will address current space challenges. It includes 11 treatment spaces, which is an increase of five (83%) over the current ED.
- The new ED offers flexible space which is better able to adapt to peak volume periods.
- The new ED will offer ambulance and barrier-free, walk-in entrances.
- The new ED will have enhanced infection control standards. Learnings from the COVID-19 pandemic have been incorporated into the design.
- There will be a private family room inside the ED and dedicated space for patients dealing with mental health concerns.
- There will be a dedicated space for women with obstetrical/gynecological health concerns.
- There will be a bigger waiting room and additional washrooms.

### **▪ How has COVID-19 impacted the planning?**

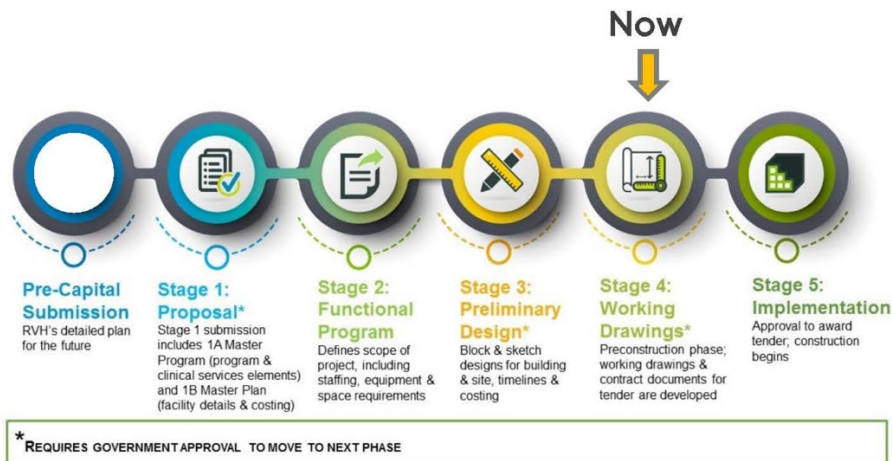
During the COVID-19 pandemic, our focus has been on keeping everyone safe. However, planning for the new ED has continued, albeit at a slower pace.

However, the COVID-19 pandemic has also provided an unexpected opportunity to further review and refine the planning for the new department. We have learned about what is needed to ensure the Hospital is prepared for these types of situations in the future. This learning has been applied to the new design.

For example, additional infection, prevention and control (IPAC) technologies have been incorporated into the design, including:

- the use of ultra-violet light for sterilization
- an updated water treatment system, and
- new drain splash backs will help reduce aerosol droplets

▪ **What are we at with the planning?**



▪ **How long will it take?**

The process of planning and construction will take several years. We are currently in stage 4 of a five-stage process. Everyone is very supportive of the project and working very hard to keep the process moving forward – especially during the COVID-19 pandemic.

▪ **Who is involved in the planning?**

Planning is being led by the Capital Projects Committee of the Board. The committee includes community members with expertise in health care, architecture and construction. Thank you to the Capital Projects Committee of the Board and everyone who has been involved in this planning, including hospital staff, physicians and volunteers, as well as members of our Patient and Family Advisory Committee.

Thank you as well to our community partners who have been involved in the planning, including the Lanark County Paramedic Service, the Ontario Provincial Police and Lanark County Mental Health.

Throughout the planning stages, input will be sought from staff, physicians, volunteers, patient family advisors, patients, neighbours, and the community.

- **Do additional funds need to be raised?**

The CPDMH Foundation has launched a \$4 million comprehensive fundraising campaign for the new Emergency Department and needed patient care equipment for the hospital. A 22-community member campaign cabinet is being led by Co-Chairs, Lori Cavanagh and Richard Kidd with the team reaching out to leaders across the community to rally their support of the project. The public launch of the campaign was announced in early September. For more details, please visit <https://www.cpdmh.ca/healthyfuturestogether>, call 613-257-4483, or email [foundation@carletonplacehosp.com](mailto:foundation@carletonplacehosp.com).

- **What about renovations to the rest of the hospital?**

It is essential to have a building environment that supports the highest quality of care and patient safety. CPDMH has a five-year facility renewal plan which identifies many necessary investments in the hospital's infrastructure. Ongoing improvements to the existing hospital continue, thanks to funding from the Ministry of Health and Long-Term Care's Hospital Infrastructure Renewal Fund (HIRF). Completed projects include roof replacement; window replacement; HVAC (heating, ventilation, and air conditioning) system upgrades; as well as plant upgrades including new boilers and floor replacements.

- **What about the other proposal for a new hospital?**

The Ministry has deferred CPDMH's proposal for a new hospital as part of a Health Village. CPDMH and the Ministry will continue to work together on long-term health care planning to meet the future needs of our local communities.

- **What else is happening at CPDMH?**

Over the past year, the CPDMH team has been focused on the COVID-19 pandemic. We have implemented many changes at the hospital to protect our community and our team – and to ensure we have the equipment and processes in place to care for our patients. Our team is also collaborating with the Almonte General Hospital, Lanark County Paramedic Service and the local Health Unit to provide COVID-19 testing at the Almonte Assessment Centre.

Over the past few months, the Mississippi River Health Alliance (MRHA) hospitals have continued their journey to support a strong, coordinated system of care. The MRHA formalizes the commitment of Carleton Place & District Memorial Hospital and Almonte General Hospital to work together. The goal is to improve every patient and resident's health care experience – close to home.

Each hospital Board is determining its own future path, as well as looking at additional ways to work together. We have developed a joint strategic plan as well as a joint clinical services plan. It will identify ways to align our programs and ensure the right services are available close to home.

Our focus on our patients has not changed and we are always looking for better ways to provide care.

- **How can I keep informed about the Emergency Department project?**

The latest details on the project can be found on the Redevelopment page of the CPDMH website at [www.cpdmh.ca](http://www.cpdmh.ca). Anyone with questions or concerns is also encouraged to contact Mary Wilson Trider, President and CEO at 613-257-2200 ext. 825 or [mwilsontrider@cpdmh.ca](mailto:mwilsontrider@cpdmh.ca).